

Winger Chair



March 2017

WWW.SUNON-CHINA.COM



01

Chapter 1: Design Overview

Design Purpose, Design Concept, Origin of the Name

02

Chapter 2: Design Key Points

The Look, Elements, Collocations, Functions, Sizes, Colors, Materials, Structural Craftwork

03

Chapter 3: Selling Points

Selling Points, Terminologies, Coding Principles, Configurations

1

Design Overview

Design Purpose

Design Concept

Origin of the Name





150
million

Cervical spondylosis

59.1%

20-40 year-olds suffer
from cervical spondylosis

200
million

Obesity

120
million

Fatty liver

20%

Chronic disease rate

76%

Suboptimal health

22%

Cardiovascular diseases

More and more younger people are suffering from health problems, and office diseases are affecting our health.



- **Relief** (Head, neck, waist pressure)
- **Formation** (The right sitting position)
- **Data** (Know about health status)

Sitting wrong sitting positions

Cardiovascular diseases

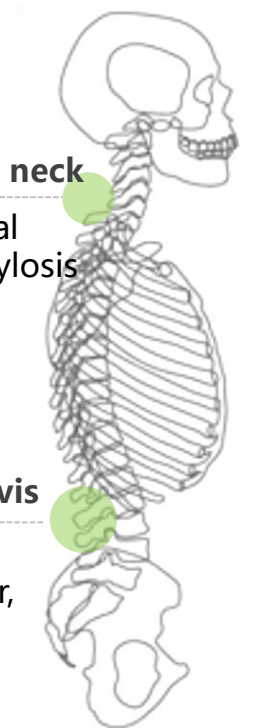
(Body out of shape)

Head and neck

Cervical
spondylosis

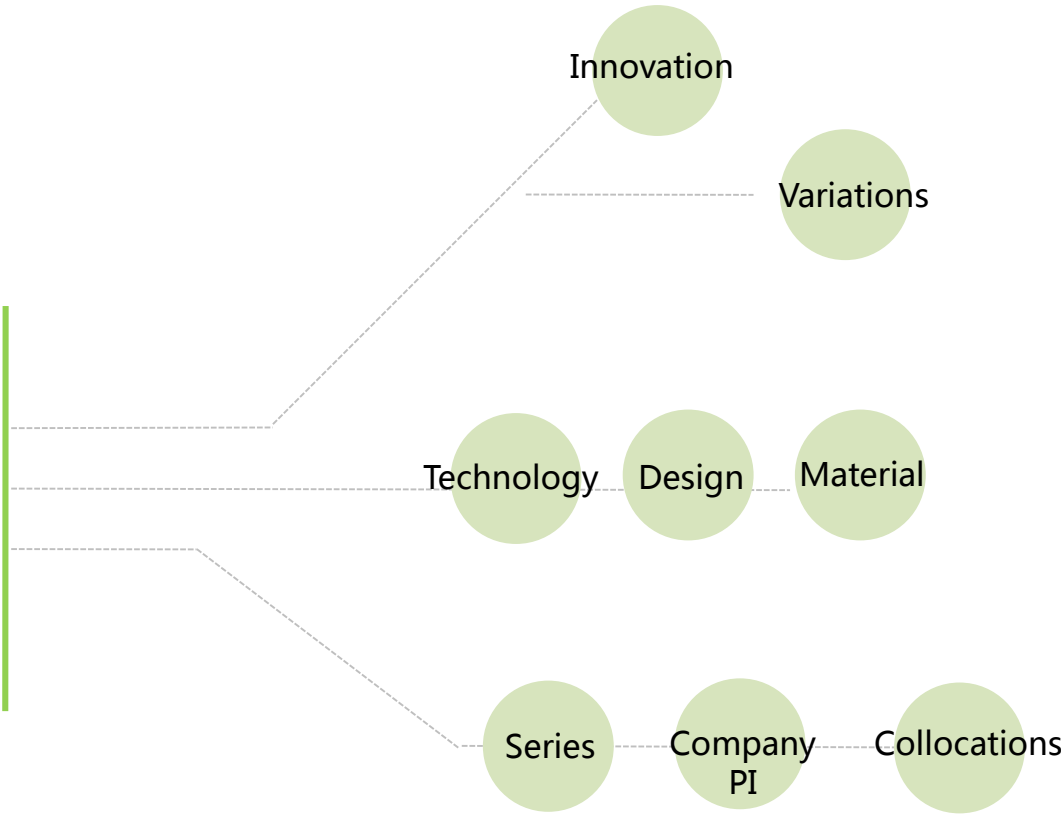
Waist and pelvis

(lumbar muscle
strain, fatty liver,
prostatitis)





- **Competitiveness**
- **Cost-effectiveness**
- **Production line**





VERTU
chair series



vogue
Series



Contain
卡特
Seating systems



Magna

Streamlined outline
design



Olive
Seating systems



winger chair

Series design



Olive

Seating systems



winger

Generation 2



winger chair



Smart and healthy office





Winger 云格

Winger ---In English, it has the meaning of side wing, which is consistent with the wing design in the new product. The Chinese character “云” is a symbol of intelligence, information and data. Compatible with the exclusive version of the smart module.

The new seat has a round curve that fits the human body and a rich selection of functions to help the staff release pressure from head, neck and waist. The exclusive version is like a smart butler, telling us about the discomfort of key parts of the body, and making more healthy and scientific adjustments in a timely and effective manner to meet the sitting posture of different body types, so that everyone has a comfortable seat suitable for them.



2

Design Key Points

The Look

Elements

Collocations

Sizes

Functions

Colors

Materials

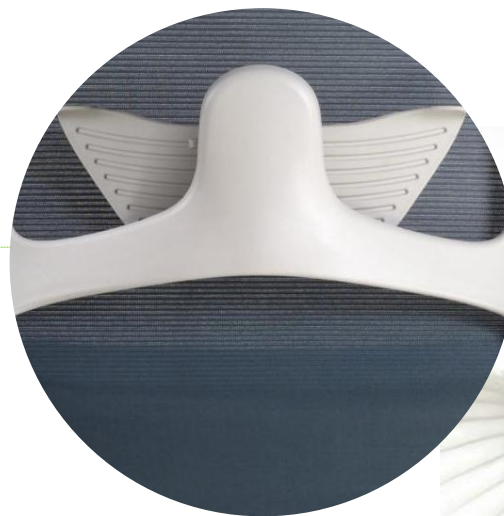
Structural Craftwork



Each back frame is exquisitely crafted, and the smooth and coherent elegance makes the entire back frame seamless.



The lines of the entire Winger series are consistent



The back frame of the waist is inspired by the swan (the symbol of elegance and pure)



The headrest is simple and airy, adding highlights to the details through the decorative pieces.



Back curve, in line with human curvature, natural fit, more comfortable



1

Mesh



1

Leather



1

Leather



2

Fabric



3

Side
chair



18
choices



9 Grey and white

Fifth code 0 , 2 ,
4 representing
white mesh chair



9 black

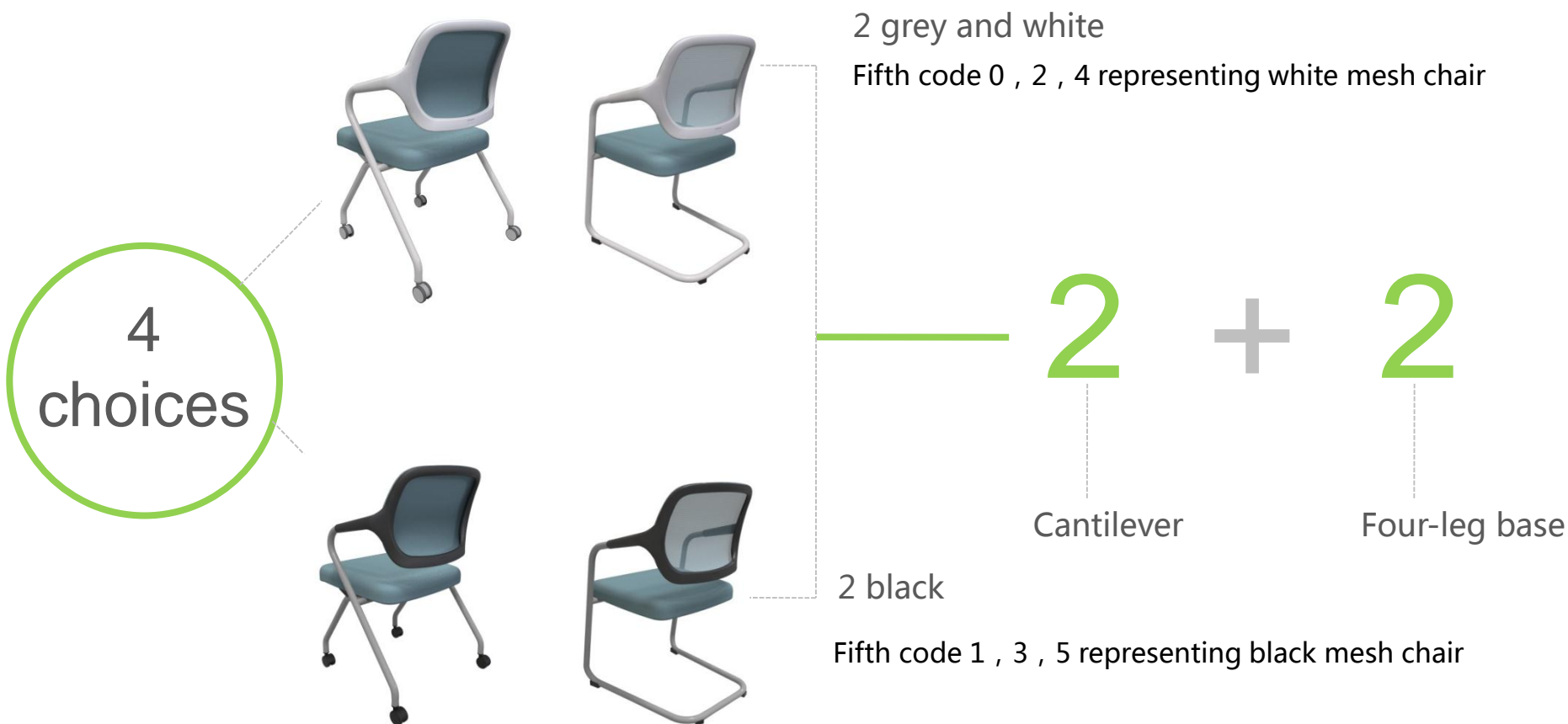
Fifth code 1 , 3 ,
5 representing
black mesh chair

$$5 + 2 + 2$$

Mesh

Leather

Fabric



Design Key Points

Elements

White

High equipment

PA adjustable headrest

Medium equipment

PA adjustable headrest

Low equipment



CWG80SW

CWG60SW

CWG82SW

CWG62SW

CWG64SW

PP+PU **multi-functional 3D** waistrest (grey white/adjustable); PU surface **4D** armrest (grey white/adjustable);

PA smart unibody seat frame

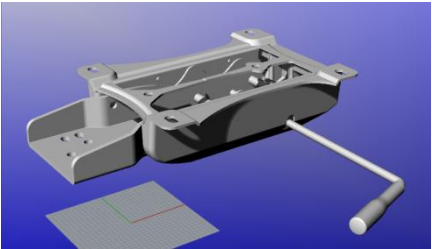
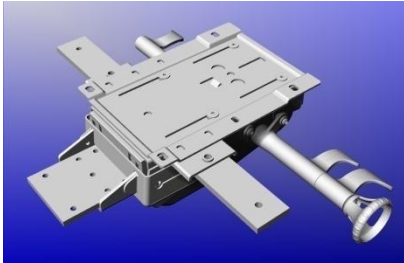
Italian Donati (with seat cushion front and rear sliding function, four-speed locking)

PP **adjustable** waistrest (grey white/adjustable); PU surface **adjustable** armrest (grey white/adjustable); PA seat frame + curved wood board

Domestic self-loading 4-speed mechanism (four-speed locking)

No waistrest
PU surface **adjustable** armrest (grey white/adjustable)

Ordinary STG single gear locking mechanism (initial state single gear locking)



Design Key Points

Elements

High equipment

PA adjustable headrest



CWG81SW

CWG61SW

Medium equipment

PA adjustable headrest



CWG83SW

CWG63SW

Low equipment

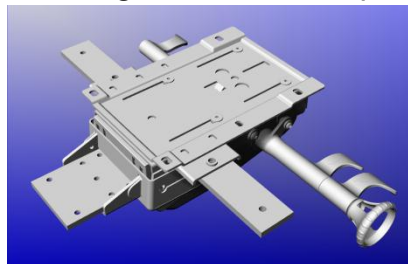


CWG65SW

PP+PU **multi-functional 3D** waistrest (grey white/adjustable); PU surface **4D** armrest (grey white/adjustable);

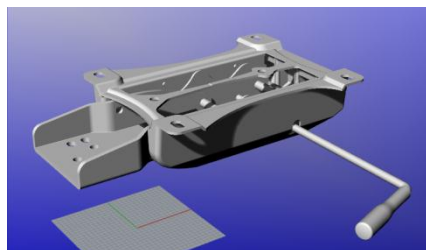
PA smart unibody seat frame

Italian Donati (with seat cushion front and rear sliding function, four-speed locking)



PP **adjustable** waistrest (grey white/adjustable); PU surface **adjustable** armrest (grey white/adjustable); PA seat frame + curved wood board

Domestic self-loading 4-speed mechanism (four-speed locking)



No waistrest
PU surface **adjustable** armrest (grey white/adjustable)

Ordinary STG single gear locking mechanism (initial state single gear locking)



Black



Leather

TP-ZP21H
TP-ZP50H



Same configuration (color black and white difference)

PP+PU multi-function 3D waist adjustable)

PU surface 4D armrest adjustable)

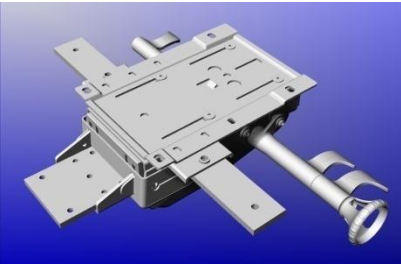
Fabric

SM-ML
imported camira



PA smart unibody seat frame

Italian Donati (with seat cushion front and rear sliding function, four-speed locking)



PA black back frame

Black nylon base

PA white back frame

White nylon base



Four-
leg
frame



CWG70GW



CWG71G..

Colors

Gray back frame +
spray white frame

Black back frame +
flash silver frame

Cantilever



CWG72GW



CWG73GW

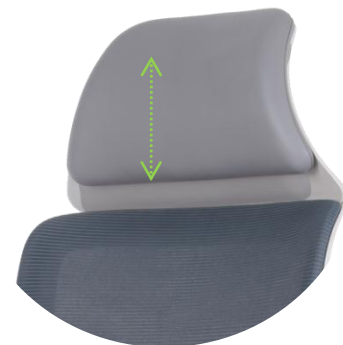
PA grey white back frame

PA black back frame



Headrest

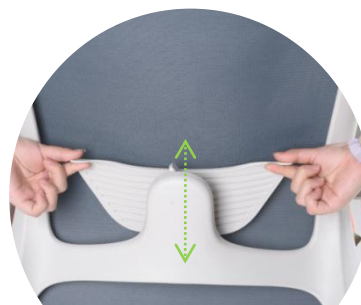
Adjustable



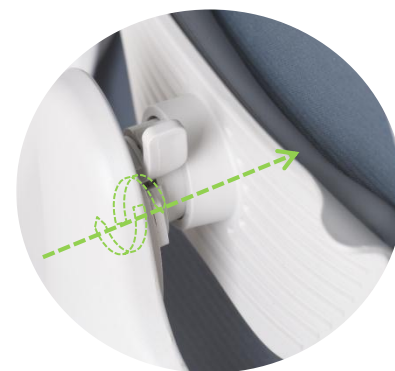
3D version

Waistrest

Simple version



Adjustable

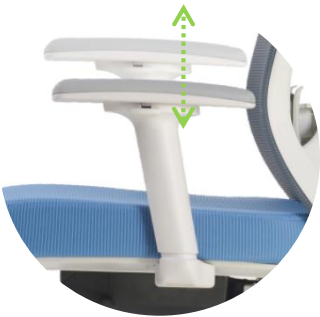


Design Key Points

Functions



Height-adjustable



Armrest



Design Key Points

Functions



Base

Donati



Back frame tilt adjustment
(angle: 4 points lock each
angle difference is 5 °)

Seat depth adjustment
(stroke: 60mm, 4th gear,
15mm per gear)



**Domestic
self-weight**



Back frame tilt adjustment
(angle: 4 locks)



Regular STG



Normal tilt adjustment,
single gear lock

Design Key Points

Functions



Rotary adjustable tilting tightness



Move up and down to adjust
the seat cushion

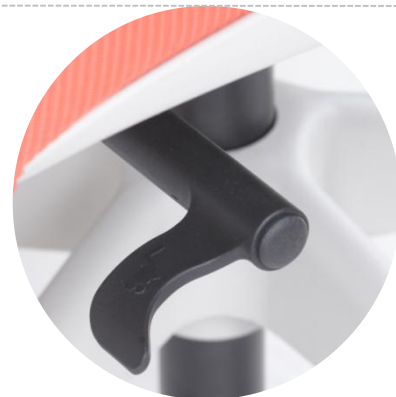


Move up and down to
adjust the seat cushion



Donati base mechanism adjustment instructions

Pull up and down to
lock the backrest



Design Key Points

Functions

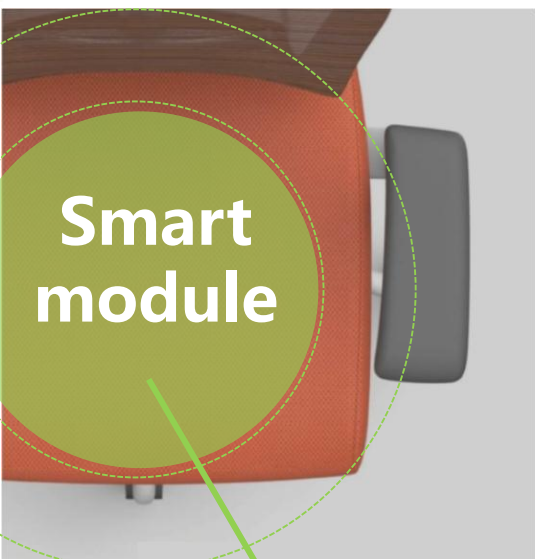


There is a manual storage box inside the seat cushion, and the user can quickly use it without discarding it.



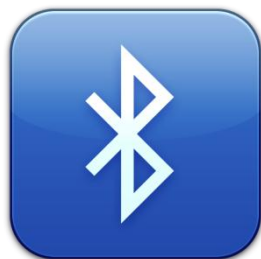
A removable velcro is used under the seat to facilitate replacement of the seat cover.





Smart
module

Bluetooth
transmission



Office system APP





● **Position**



● **Time**



● **Staff management**



● **Heart rate**



● **Respiratory rate**

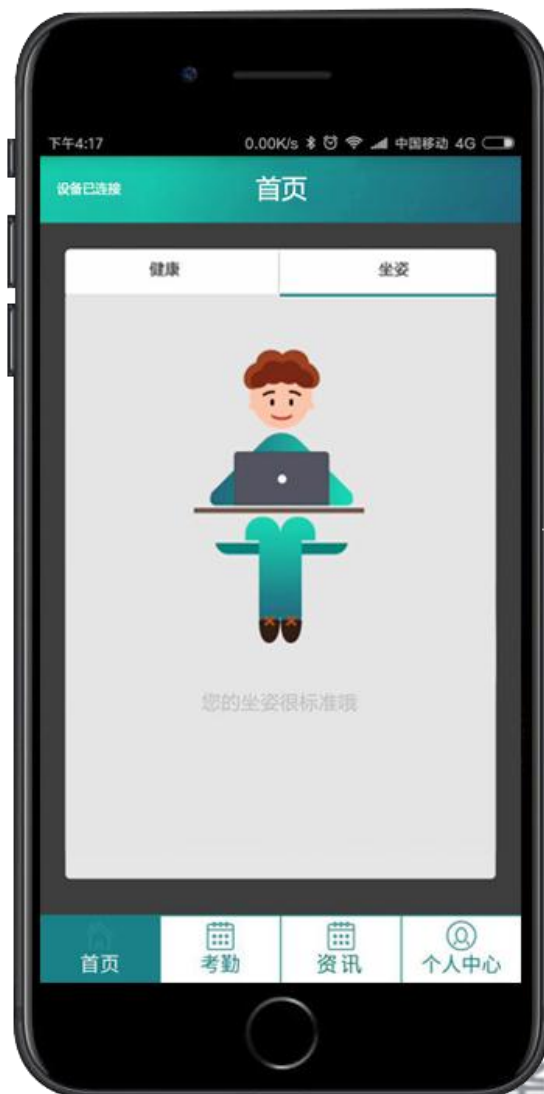
The seat cushion has built-in sensors to detect the pressure distribution, duration, heart rate, etc. of the user, and transmit the data to the APP.

5
functions



Detect your sitting posture from the user's point of view, and remind you of the health issue that you ignore

Standard position



Wrong position

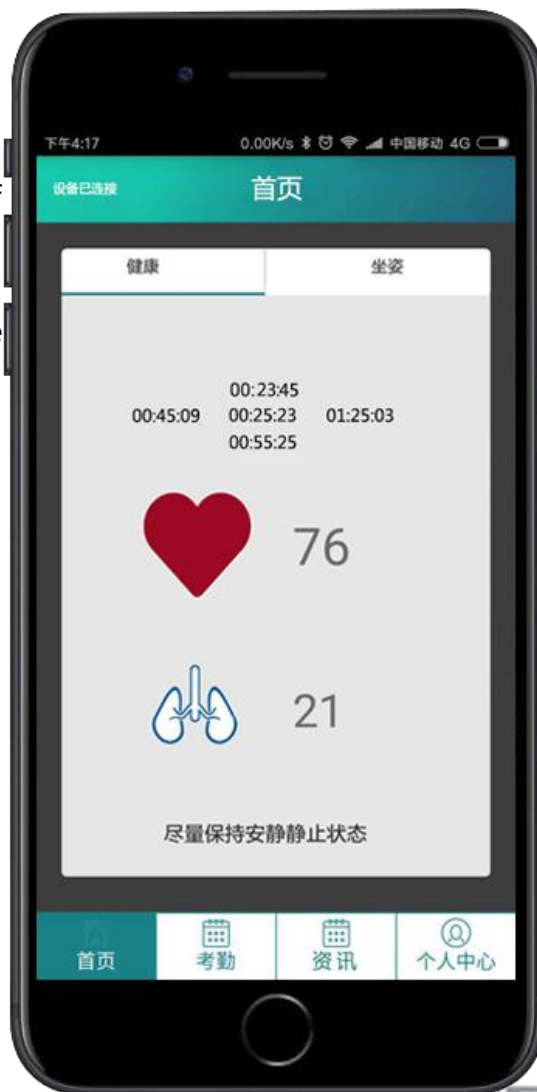




Real-time detection of the duration of the sitting, setting reminders, recommending simple health exercises, good habits starting with small changes.

Data, figurative understanding of your own health, better for users to adjust in time

Data



Reminder





Convenient for
business management;
Improve management
efficiency

Attendance record



More functions coming soon

Winger

Stacking chair——saving space



Design Key Points

Sizes

Unit: MM

White

Note:

Allowable error (mm)

Width (with armrest) ±15

Back height:±20

Seat height: ±20

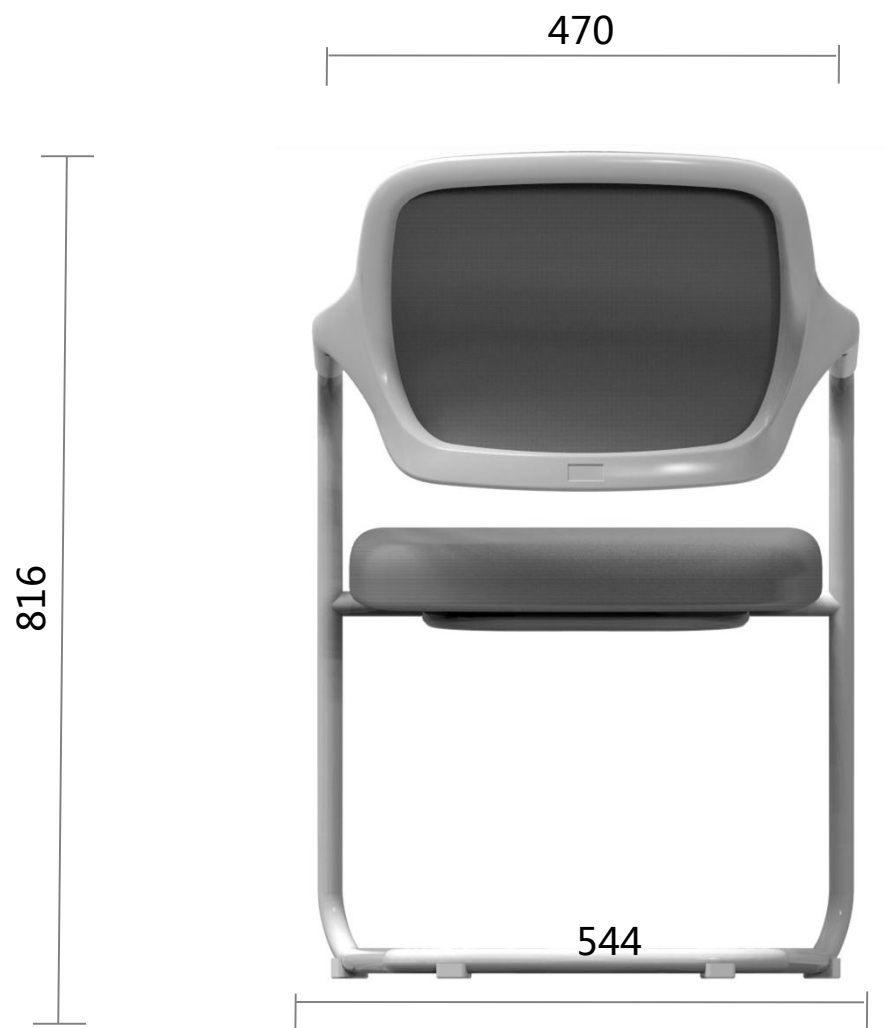
Seat depth: ±25

Armrest height: ±20



CWG80SW

Unit: MM



CWG72GW

White



Name	CWG80SW	CWG82SW	CWG60SW CWG60SC CWG60SM	CWG62SW	CWG64SW
	CWG80SC				
	CWG80SM				
mm (width*depth*height)	615*560*1295	615*560*1275	615*560*1082	615*560*1062	-



White



Name	CWG70GW	CWG72GW
mm (width*depth* height)	615*560*1295	615*560*1275

camira
style with substance

Clients

Steelcase

Herman Miller

HAWORTH

bene



Ingredients: 70% wool 30% linen
Good flame retardancy, high wear resistance, ten-year warranty,
environmentally friendly

Wear resistance test

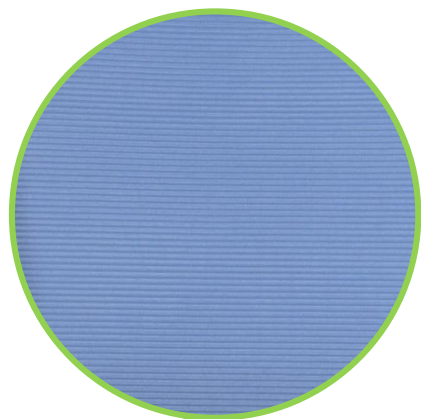


Flame retardant testing



10-year warranty





Clients



Korean Wintex



patra



Innovation



Function



Practical



Design

100% polyester, innovative, waterproof and fireproof, fine texture, tested in a variety of fields.



NAPPA

Nappa has a wide range of applications in furs, vamps, bags and other industries. Nappa mainly refers to a style and a representative process. Nowadays, Nappa is generally referred to as the first layer of cowhide.

Style: Nappa wrinkles, thickness 1.0-1.2MM. Soft, cold-resistant and noble

Mesh



Leather



Fabric



CW-AN系列



CW-AN10H



CW-AN21H



CW-AN80H



CW-AN30H



CW-AN40H



CW-AN50H



CW-AN60H



CW-AN70H

CW-AN系列



CW-AN10H



CW-AN21H



CW-AN80H



CW-AN30H



CW-AN40H



CW-AN50H



CW-AN60H



CW-AN70H



TP-ZP50H



TP-ZP21H



TP-ZP50H



TP-ZP21H



SM-ML
82B



SM-ML
21B



SM-ML
81B



SM-ML
40B



SM-ML
50B



SM-ML
60B



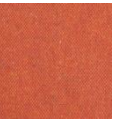
SM-ML
82B



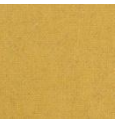
SM-ML
21B



SM-ML
81B



SM-ML
40B



SM-ML
50B



SM-ML
60B

Backrest

Seat

9 Colors





Backrest

CW-AN系列



CW-AN10H CW-AN21H CW-AN80H CW-AN30H



CW-AN40H CW-AN50H CW-AN60H CW-AN70H

C-AK



C-AK01 C-AK02 C-AK03 C-AK04



C-AK05 C-AK06 C-AK07

C-AH



C-AH04 绿色 C-AH05 橙色 C-AH06 红色



C-AH01 黑色 C-AH02 灰色 C-AH03 蓝色

Seat

CW-AN系列



CW-AN10H CW-AN21H CW-AN80H CW-AN30H



CW-AN40H CW-AN50H CW-AN60H CW-AN70H

C-AC



C-AC03 橙黄色 C-AC04 蓝色 C-AC05 青色

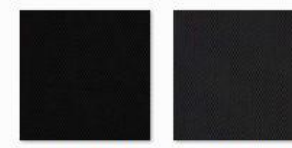


C-AC06 黑色 C-AC07 灰色 C-AC09 浅绿色



C-AC11 酒红色 C-AC12 橘黄色 C-AC14 深蓝色

C-AS



C-AS01 黑色双网 C-AS02 灰色双网(大孔)

Fabric colors



AN Mesh colors





White



PU black

PA black

ABS gray

C-AN mesh/TP-ZP21H TP-ZP50H/SM-ML imported camira fabric

PA black

PP+PU black

PU black

C-AN mesh/TP-ZP21H TP-ZP50H/SM-ML imported camira fabric

PA black /PA+ curved wood board

Donati /domestic self-loading 4 gear mechanism / ordinary STG single gear lock

Nylon black

PA black

PP black



3

Selling Points

Selling Points

Terminologies

Coding Principles

Configurations

Honors

The look (The overall shape is elegant and generous, the lines are exquisite)

The color (Complete configuration, multi-material, multi-color, adapt to different office environments, high integration)

Smart (Intelligent seat concept implantation, truly for the user's health, helps users to develop a good sitting posture, improve management efficiency)

Versatile (A variety of chassis mechanisms, quick-loading armrests, 3D waist support are designed to fully meet the needs of different body shapes)

Human-centered design (Convenient storage box at the bottom of the cushion, convenience of replacement of the cushion Velcro)

comfortable (The seat cushion is made of styling cotton, high resilience, high density, sedentary and not easy to deform, the back curve naturally fits the human spine, using a variety of materials)

Space-saving (Conference chairs can be stacked to save space)

Description:

For example, code: $\frac{C}{1} \frac{WG}{2} \frac{8}{3} \frac{0}{4} \frac{S}{5} \frac{W}{6}$

- 1: Seat—— C
2: Series short code —— WG stands for Winger series
3: Memory code —— 8 means high back executive chair, 6 means middle back staff chair
4: Serial code — use 0, 2, 4 to indicate gray white, 1, 3, 5 for black
5: Mechanism code —— S means synchronous tilting mechanism
6: Function code —— W means fabric



CWG80SW 主管椅



Selling Points

Configurations



Selling Points

Configurations





Selling Points

Configurations



具体以实物为准。效果图仅供参考。





Appearance patent (5 items)

Staff chair (medium-high backrest)201630423751.4

Armrest 201630423232.8

Executive chair (high backrest)201630423222.4

Staff chair (low backrest)201630423228.1

Meeting chair 201630423225.8

Invention patent (2 items)

A seat with sedentary reminder and sitting adjustment 201710112658.5

A seat with attendance function 201710112726.3



- Department: R&D Center
- Name: Li Jing / Jane
- Position: Senior Industrial Designer
- Contact: 13456855686



- Department: R&D Center
- Name: Zhang Fucheng
- Position: Senior Structural Designer
- Contact: 18758009629



END .
THANK YOU !

